

## IMPORTANT ABBREVIATIONS AND DEFINITIONS

---

### MOC

#### *Maintenance of Certification*

Maintenance of Certification program, as required by the American Board of Medical Specialties (ABMS)

### LLSA

#### *Lifelong Learning and Self-Assessment*

The criteria for Lifelong Learning in Neurosurgery consists of 150 CME hours every three years; and self-assessment of practice by taking the SANS examination every three years.

### CAT

#### *Communication Assessment Tool*

Measures patient perception of physician performance in the area of interpersonal and communication skills.

### SANS

#### *Self-Assessment in Neurosurgery*

Web-based examination completed every three years. Administration of exam is done in conjunction with the Congress of Neurological Surgeons.

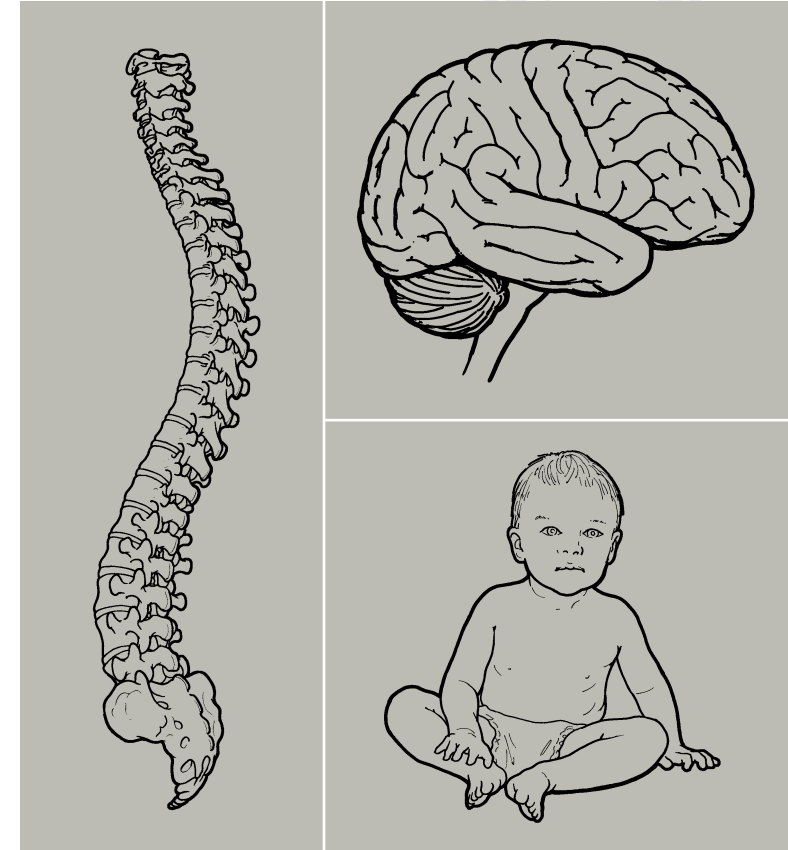
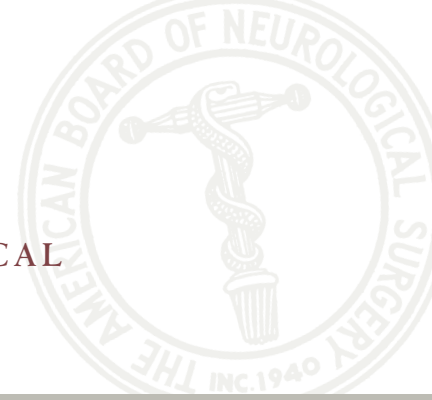


*A member board of the American Board of  
Medical Specialties (ABMS)*

6550 Fannin Street  
Suite 2139  
Houston, Texas 77030-2701  
Phone: (713) 441-6015  
Fax: (713) 441-0207  
E-mail: [abns@tmh.tmc.edu](mailto:abns@tmh.tmc.edu)

*The AMERICAN BOARD of  
NEUROLOGICAL SURGERY*

*The  
AMERICAN  
BOARD of  
NEUROLOGICAL  
SURGERY*



*Neurosurgical  
Maintenance of Certification*

Starting July, 2005  
Basic Information and Important Dates

## IMPORTANT DATES

---

### July 1, 2005

Diplomates with time limited certification will receive an MOC application from the ABNS.

### 2005

After application submitted, Diplomate will receive user name, password, and MOC instructions.

### January 1, 2006

First enrollment.

### March 2007

First MOC cognitive exam administered.

### December 31, 2008

End of first three year cycle.

### Summer 2009

New certificates issued.

## The Four Components of Neurological Surgery Maintenance of Certification (MOC)

### 2005 Start Date

1. Professional Standing (every three years)
  - Full, unrestricted license to practice medicine in all jurisdictions in which the Diplomate practices.
  - Hospital admitting privileges to practice neurosurgery.
  - Recommendations from the chief of staff of primary hospital.
2. Lifelong Learning and Self-Assessment (LLSA) (every three years)
  - 150 hours of CME
  - SANS examination
3. Cognitive Knowledge (every ten years)
  - MOC Cognitive Examination taken during the 8th, 9th, or 10th year of the MOC process.
4. Performance in Practice
  - Key Cases selected from a list of procedures which cover the subspecialties (every three years)
  - CAT (every three years) – 15 question survey given to 20 patients who respond via telephone or internet.
  - Surgical Case Log consisting of six months of practice data submitted every 10 years within four years of the end of the 10 year cycle.

*For those Diplomates who received time-limited certificates in 1999, the MOC process which includes a cognitive examination, will replace the planned recertification examination.*

*For additional information about MOC, go to [abns.org](http://abns.org). Information is updated regularly.*

*Do we have your correct mailing address? Send an e-mail to [ABNS@tmh.tmc.edu](mailto:ABNS@tmh.tmc.edu) and update your mailing address if it has changed. The ABNS will need your correct mailing address, including e-mail, to send you the Neurosurgery MOC on-line user name and password.*